



colour laser printer

# Big colour for small business...



...at a small price.



# Phaser 6100

## Colour Laser Printer

### Brilliant colour at a super-low price.

Now, a fully-featured colour laser printer doesn't have to come with a high price tag. The Xerox Phaser 6100 Colour Laser Printer produces page after page of impressive colour output and offers two-sided printing as a standard feature...yet it still comes at a surprisingly low price.

### The full-function entry-level colour laser printer

We've packed many of the business-grade features you'd expect to find in high-end colour printers into the Phaser 6100 colour laser printer, making it a fine addition to any small business or workgroup. The one thing we didn't leave room for is compromise.

- 21 ppm black and white output; 5 ppm colour. You don't sacrifice black and white speed to add colour.
- Standard automatic two-sided printing saves paper and simplifies production of professional-looking documents
- 64 MB of standard memory for better performance
- Quick response – first colour page in under 24 seconds; 15 seconds for black and white
- Generous 250-sheet paper tray, plus 100-sheet multipurpose tray boosts productivity
- Super-quiet operation makes the Phaser 6100 colour laser printer office-friendly

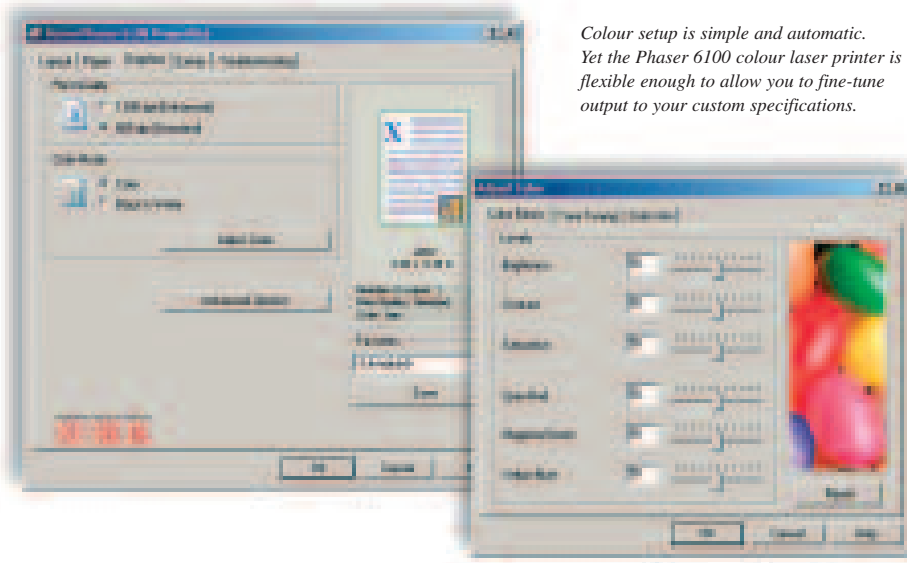




## Better design means greater value.

*The Phaser 6100 colour laser printer is a quality machine from top to bottom. It leverages years of Xerox experience with colour printing and laser technology to provide professional-quality print results ... despite its low price point.*

- ① The only colour laser in its class to offer standard automatic two-sided (duplex) printing.
- ② 100-sheet Multipurpose tray offers wide media flexibility: custom paper sizes, envelopes, transparencies (black and white only) and labels.
- ③ Additionally, the Phaser 6100 laser printer provides a full 250-sheet paper tray.
- ④ Add an optional 500-sheet feeder to support expanding office needs.
- ⑤ 250-sheet output bin for longer unattended operation.



*Colour setup is simple and automatic. Yet the Phaser 6100 colour laser printer is flexible enough to allow you to fine-tune output to your custom specifications.*

## Outstanding print quality

Enjoy the crisp, sharp output that makes laser so popular among business users. You get vivid, high-impact prints that give every document a more professional look.

- 600 dpi Standard Mode produces excellent results; crisp, 1200 dpi Enhanced Mode for when the highest print quality is needed
- Xerox TekColor® technology automatically gives you the best results every time you print
- Expert colour calibration tools allow you to further fine-tune your prints

## Colour without complications

The Phaser 6100 colour laser printer has everything you need to enter the brilliant world of colour printing right away. Out of the box, you're immediately productive.

- Intelligently engineered, simplifying both setup and everyday use – a few mouse-clicks is all it takes for any operation
- Network configured Phaser 6100 printers can be made accessible to everyone on the office network
- Toner and routine maintenance items are easily changed by users; high-capacity consumables are also available
- Embedded web server provides for easy management via any web browser (6100DN configuration)

## need more information?

Find it at [www.xerox.com/office](http://www.xerox.com/office)

**See the 6100 in action.** Visit your Xerox reseller, or see a virtual demo: [www.xerox.com/office/6100demo](http://www.xerox.com/office/6100demo)

**Services & Support.** Learn about Total Satisfaction Services™ award-winning programs: [www.xerox.com/office/support](http://www.xerox.com/office/support)

**Get colour connected.** Take a look at Color Connection (exclusively for our printer owners), which includes access to a special web site, newsletters, tutorials, product upgrades and great ideas: [www.colorconnection.xerox.com](http://www.colorconnection.xerox.com)



Phaser 6100DN printer shown with optional 500-sheet feeder



## CONFIGURATIONS

	Phaser 6100BD	Phaser 6100DN
<b>Performance</b>		
Print speed	21 ppm Black and White / 5 ppm Full Colour	
First page out	15 seconds Black and White / 24 seconds Full Colour	
Memory	64 MB RAM	
Maximum duty cycle	Up to 35,000 pages/month	
<b>Print Quality</b>		
Resolution	1200 x 600 dpi Enhanced Mode, 600 x 600 dpi Standard Mode	
<b>Networking</b>		
Network connectivity	Bi-directional Parallel, USB 2.0	Bi-directional Parallel, USB 2.0, 10/100BaseTX Ethernet
<b>Paper Handling</b>		
Automatic 2-sided printing	Standard	
Paper input capability		
Standard	100-sheet Multipurpose Tray; 250-sheet Tray 1	
Optional	Optional 500-sheet Feeder	
<b>Productivity</b>		
Standard features	Booklet printing, Watermarks, Custom Page Sizes, Favourites (Driver macros), Poster, Scaling and Scale-to-fit, N-Up Printing, Selectable Jam Recovery, Consumable Life Reporting	
		CentreWare® IS Embedded Web Server, PrintingScout Alert Notification, Online troubleshooting
<b>Warranty</b>		
	One year on-site	

## SPECIFICATIONS

### Network/Software

**Printer management** (Phaser 6100DN only)  
CentreWare® IS Embedded Web Server,  
PrintingScout Alert Notification, CentreWare Web

**Font capabilities** Windows font

**Printer drivers** Windows 98/Me/NT/2000/XP/  
Server 2003, Mac OS 9.x/10.x + [USB only;  
network support available 5/2004]), Linux

**Languages** Host-based

### Paper handling

**Multipurpose Tray** (standard) 60 – 160 gsm,  
Phaser 35-Series Premium Transparencies (black  
and white only), Labels, Envelopes. Media sizes:  
*Single-sided printing:* A4, A5, A6, B5-ISO, B5-JIS,  
letter, legal, folio, Executive, Statement. Envelopes:  
C5, C6, #10 Commercial, Monarch, DL, and  
custom sizes from 90 – 140 mm x 216 – 356 mm;  
*Automatic 2-sided printing:* A4, Letter, Folio Legal  
13 in., Legal 14 in.

**Tray 1: 250-sheet tray** *Single-sided printing:*  
60 – 90 gsm; *Automatic 2-sided printing:*  
75 – 90 gsm. Media sizes: A4, Letter

**Lower tray 500-sheet feeder (optional)**  
60 – 90 gsm, Media sizes: A4, Letter; *Automatic  
2-sided printing:* 75 – 90 gsm. Media sizes: A4,  
Letter

### Special features

**Productivity tools:** Booklet printing, Watermarks,  
Custom Page Sizes, Poster, Scaling and Scale-to-  
fit, N-Up Printing, Selectable Jam Recovery

**PrintingScout** Pop-up troubleshooting Help window

### Colour controls

**Print quality modes:** Enhanced mode:  
1200 x 600 dpi; Standard mode: 600 x 600 dpi

**Colour matching** TekColor® technology: Colour,  
Black and White, Colour adjustment control

### Operating

**Dimensions** width: 510 mm, height: 405 mm,  
depth: 470 mm, weight: 32 kg; (with consumables,  
35 kg)

**Environment** Temperature: Non-operating:  
-20° – 40° C, Operating: 15° – 32.5° C; Relative  
Humidity: Non-operating: 10 – 80% RH,  
Operating: 20 – 80% RH

**Noise Level:** < 40 dB standby, 48 dB running

**Electrical** 200 – 240 VAC / 100 – 127 VAC at  
50/60 Hz; Consumption: Printing 450 W max  
(optional 500-sheet feeder); Power Save:  
35 W max

**Regulatory** FCC Part 15 Subpart B, UL listed to  
UL 1950, UL Certified to CSA – C22.2 No.  
950-M93, FDA 21 CFR Sub J, CE Mark applicable to  
directives 73/23/EEC and 89/336/EEC, TUV –  
GS Mark, IEC 950 Second Edition (EN 60950,  
EN 60825)

### Customer Support

1-year on-site warranty, online web technical  
support and telephone support. Innovative service  
offerings include extended Service Agreements.

## MEDIA AND SUPPLIES

Phaser Colour Printing Media	
<b>Phaser Premium Colour Printing Paper</b> 500 sheets, 90 gsm bond A4 (210 x 297 mm)	016136900
<b>Phaser Premium Cover Paper</b> 100 sheets, 163 gsm cover A4 (210 x 297 mm)	016182400
<b>Phaser 35-Series Premium Transparency Film</b> 50 sheets A4 (210 x 297 mm)	016189700
<b>Phaser Weatherproof Paper</b> 150 Sheets, 100 gsm A4 (210 x 297 mm)	103R01021
<b>Supplies Startup Kit Economy Pack</b> A4 (210 x 297 mm)	097S03105

Consumables	
<b>Standard-Capacity Toner Cartridges*</b>	
Cyan (up to 2,000 pages)	106R00676
Magenta (up to 2,000 pages)	106R00677
Yellow (up to 2,000 pages)	106R00678
Black (up to 3,000 pages)	106R00679

<b>High-Capacity Toner Cartridges*</b>	
Cyan (up to 5,000 pages)	106R00680
Magenta (up to 5,000 pages)	106R00681
Yellow (up to 5,000 pages)	106R00682
Black (up to 7,000 pages)	106R00684

Routine Maintenance Items	
Waste Cartridge (5,000 pages)	106R00683
Imaging Unit (50,000 pages black/12,500 pages colour)	108R00593
Transfer Belt (50,000 pages black/12,500 pages colour)	108R00594

Options	
<b>500-Sheet Feeder</b> Adjustable to Letter and A4 sizes	097S03103

\*Capacities are approximate, based on 5% coverage on an A4-sized page.

For the location of your nearest  
Xerox reseller, or for more  
information, visit our Web site.

