



ColorWise also includes EFI ColorCal which uses the multifunctional device's scanner to calibrate the colours. With 60 values being taken for every primary colour and two reference scales, measurement variations and colour variations on a page are accurately compensated for. The result is always an image quality that will satisfy even the most demanding graphic artist.

## SECURITY – A MULTI-LEVEL INFORMATION SHIELD

Protecting your data is good business sense, and in many businesses it is also becoming a legal requirement. The Fiery controller comes complete with a series of features that will protect your data from potential dangers, both inside and outside your company – from the client all the way to the printer. Prevent documents from falling into the wrong hands by using the password printing function, which only starts the print run when a password has been entered at the printer. User authentication and password-protected mailboxes ensure a secure workflow. And with security features such as port blocking, IP-filtering and SSL/TLS support, data security is never an issue.

## HIGHLIGHTS:

- ▶ Colour management for the precise control of CMYK, RGB, CIElab and special colours
- ▶ Smart RIP technology for high-level productivity even when printing complex graphic documents
- ▶ Intelligent order processing management
- ▶ Wide range of functions for document workflow optimisation
- ▶ State-of-the-art data security from the client to the printer
- ▶ Seamless network integration
- ▶ Adobe® postscript®

## Fiery® GA-1310

FIERY CONTROLLER FOR TASKalfa 550c, 650c and 750c.



EFI offers you complete print solutions that can help to increase company productivity and profits. Find out more at [www.efi.com](http://www.efi.com).

General	Software	Options
<b>Engine</b> Fiery controller GA-1310 <b>Controller</b> EFI Fiery System 8e <b>CPU</b> Intel Celeron 2.8 GHz <b>Memory capacity</b> 512 MB (up to 1 GB) + 80 GB HDD <b>Interfaces</b> Ethernet (1000Base-T/100Base-TX/10Base-T), USB-Direct-Print <b>Network protocol</b> TCP/IP, IP X/SP X, AppleTalk, SMB <b>Resolution</b> 600 dpi x 600 dpi, 8 bit (full colour), 1,200 dpi x 1,200 dpi, 8 bit (full colour), 256 greyscales <b>PostScript fonts</b> 136 Adobe PostScript fonts, PostScript3 80 PCL fonts <b>Operating systems</b> Windows 2000, Windows XP/XP 64 bit, Windows Server 2003, Windows Vista/Vista 64 bit, MacOS X <b>Colour mode</b> Auto colour (ACS), colour, b/w <b>Safety standards</b> TUV/GS, CE	<b>Software</b> EFI controller EFI desktop SE Fiery ColorWise – calibrating tool EFI Command Workstation (Windows and Macintosh editions) EFI Fiery WebTools	<b>Options</b> EFI Spot-On® EFI Auto-Trapping EFI Hot Folders/Virtual Printers EFI Impose, Fiery Edition EFI Color Profiler incl. ES-1000 Photospectrometer EFI Secure Erase



Your KYOCERA Business Partner:

0911BRE\_EFI\_Fiery\_EMC

KYOCERA MITA Europe B.V. – Branch Office Germany – Otto-Hahn-Straße 12 – 40670 Meerbusch – Germany  
Tel +49 (0) 2159 928-500 – Fax +49 (0) 2159 918-100  
[www.kyoceramita-europe.com](http://www.kyoceramita-europe.com) – [info@kyoceramita-europe.com](mailto:info@kyoceramita-europe.com)

KYOCERA MITA Corporation – 2-28, 1-Chome – Tamatsukuri – Chuo-Ku  
Osaka 540-8585 – Japan – [www.kyoceramita.com](http://www.kyoceramita.com)

\* KYOCERA does not warrant that any specifications mentioned will be error-free. Specifications are subject to change without notice. Information is correct at time of going to press. All other brand and product names may be registered trademarks or trademarks of their respective holders and are hereby acknowledged.



# PROFESSIONAL COLOUR MANAGEMENT.

THE FIERY® CONTROLLER FOR TASKalfa 550c, 650c and 750c.



COUNT ON US. KYOCERA

# MADE TO MEET ALL YOUR COLOUR NEEDS.

If colour is important for your business, then the EFI Fiery controller is perfect for your business. The EFI Fiery controller will optimise your colour management, providing precise colour control with a range of tools that make colour management fast and easy. Combined with the TASKalfa 550c, 650c and 750c the EFI Fiery controller is your guarantee for optimised productivity, high safety standards and professional colour management.

## SMART-RIP TECHNOLOGY – OPTIMAL INFORMATION FLOW

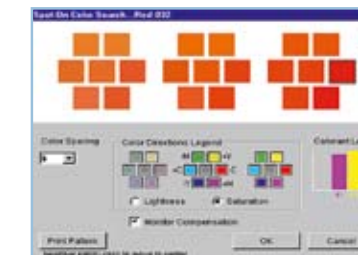
The EFI Fiery controller works with intelligent smart-rip technology to ensure maximum printer performance for even the most complex colour images. An interactive interface provides convenient access to all frequently used functions and settings. And the EFI Fiery controller comes complete with a wide range of functions that optimise every aspect of the colour creations you produce.

## COLORWISE – A SMART APPROACH TO COLOUR REPRODUCTION

ColorWise® is a RIP-based colour management system that ensures constant and reliable colour reproduction, time after time. An intelligent selection of colour tools enables users to attain precisely those colours that they need. Highly convenient when working with the TASKalfa 550c, 650c and 750c.

## EFI SPOT-ON® – THE DOORWAY TO ALL MAJOR COLOUR SYSTEMS

EFI Spot-On® supports all established special colour systems such as HKS, Toyo and DIC. Colours from the Pantone® library of colours are automatically translated into the optimal CMYK values. For any other colour systems that you may use, EFI Spot-on® translates them all, guaranteeing consistently precise colour reproduction.



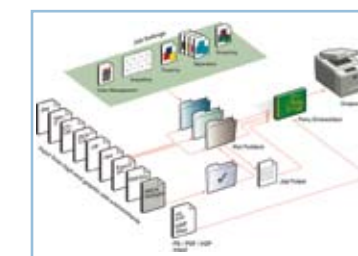
## AUTO-TRAPPING – NOTHING BUT COLOUR



Auto-trapping is a fast and simple way to ensure that your image output is always the best it can be. The function safeguards against the appearance of those very disturbing white edges, called knock-out, at the transition from one colour area to another. All parameters for the colour coverage can, of course, be precisely adjusted to meet specific needs.

## HOT FOLDERS – SIMPLIFIED SETTING APPLICATION

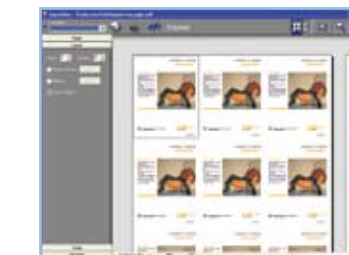
The hot folders function allows users to assign predefined settings to a folder. When a job needs to be printed to a certain specification, the user can simply drag and drop the files into the corresponding folder. No time is lost re-entering settings, and even the youngest trainees can carry out the most complicated printing jobs.



## VIRTUAL PRINTER – AUTOMATING COMPANY PRINTING PROCESSES

Virtual printers can be set up and preconfigured by the network administrator. This enables defined company processes to be carried out automatically, ensuring that there are no mistakes due to human error.

## IMPOSE FIERY – PREPARING LARGE DOCUMENTS FOR PRINT



The Fiery controller enables you to impose multipage documents without the help of specialised software. Even without the original source file, print jobs can be imposed as needed and the final files stored on the server as a PDF, or sent on via the internet to your clients.

## COLOR PROFILER – FOR EFFICIENT OVERVIEW AND MANAGEMENT

Enables users to set up a colour profile, show the profile and test it, as well as providing control over every single step in the colour printing process.



## SECURE ERASE – GONE WITHOUT A TRACE

The optional "Secure Erase" function removes electronic data and hidden images from the Fiery hard drive without leaving any information that could lead to a reconstruction of the file.

## COUNT ON US.

As one of the leading manufacturers of office document solutions, KYOCERA is committed to delivering consistently high-quality products and services. We not only provide you with the most reliable hardware and software, but also offer exceptional service, comprehensive consulting and tailor-made financing. Whatever your needs – you can count on us. Want to know more? Simply get in touch with your local KYOCERA Business Partner.