

DS-620

brother
at your side



Brother professional mobile document scanner

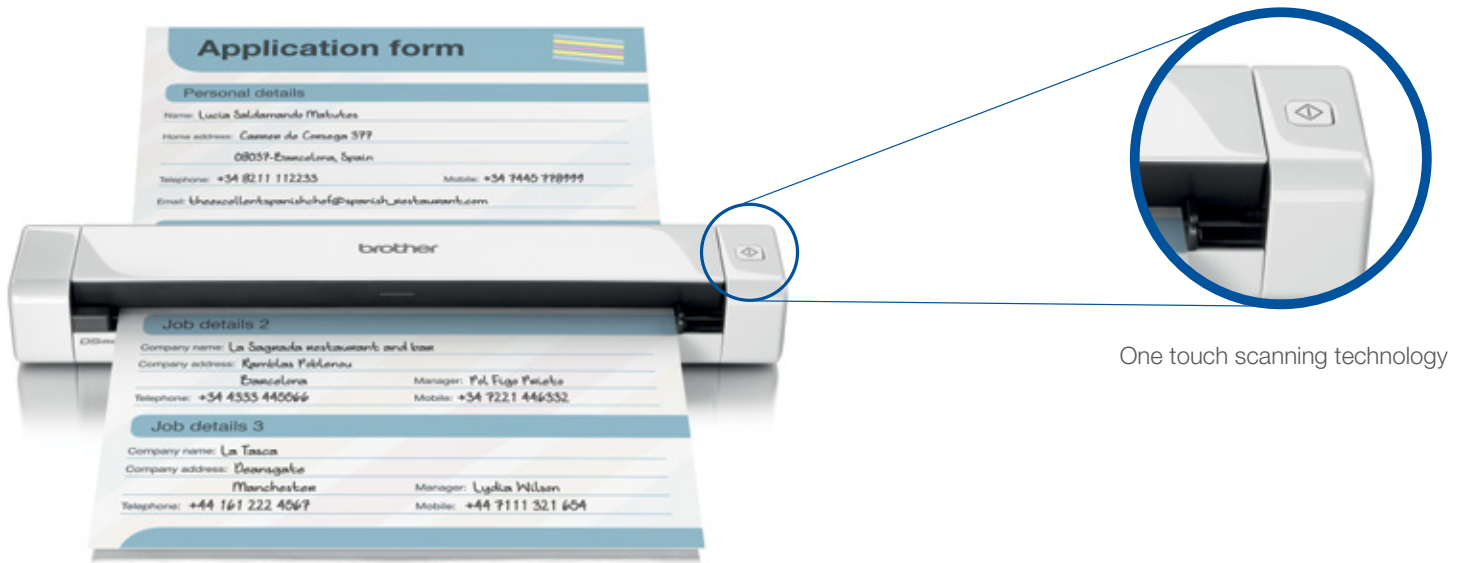
The DS-620 makes scanning, sharing and organising your documents effortless. Powered simply by USB from your laptop, the powerful industry leading software takes care of the rest.

- 7.5ppm (8 seconds per page)
- USB powered
- Compatible with Windows® and Mac
- Up to 600 x 600 dpi
- Compact dimensions
- Professional software suite included

Compact, stylish and easy to use

Introducing the new stylish and compact DS-620; designed and built to make your life organised and more productive.

The DS-620 has the ability to scan all your documents (including plastic ID cards and receipts) ready to be saved to the cloud, making them available to view on your mobile device and meaning your data is always with you.



One touch scanning technology



High quality



Compact



USB Powered

Product features:

High quality

- Up to 600 x 600 dpi scanner resolution

Compact

- Compact dimensions - 290.5(W) x52.5(D)x36.7(H)
- Weighing only 400g

Easy to use

- One touch scanning technology
- Powered simply by USB

Compatibility

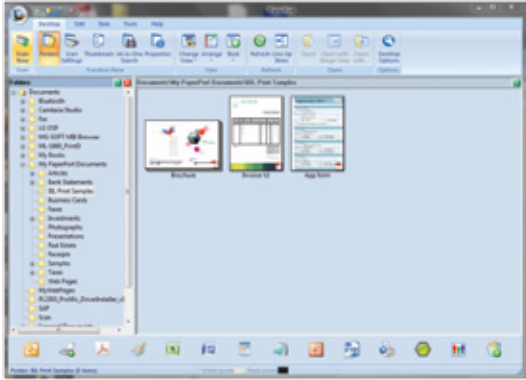
- The supplied TWAIN driver allows seamless integration into various document management systems

Fast and efficient

- Scan speed up to 7.5ppm (8 seconds per page in A4 at 300dpi) in monochrome and colour
- Scan to various destinations including: image, e-mail, file, app, printer, shared network folder, OCR, FTP, cloud and SharePoint®
- Scan anything from business cards, plastic ID cards, photographs and receipts up to A4 documents

The bundled suite of software includes:

The DS-620 is bundled with powerful software to become the perfect solution for document management and improved workflow.



Nuance™ PaperPort™ 12SE (Windows®)

Powerful document management, editing and PDF creation program with connector for Microsoft® SharePoint®.

NewSoft® Presto!® PageManager 9 (Mac)

Scan and organise digitised files...View, edit, e-mail or save files as searchable PDF, HTML, RTF, or TXT files.

Button Manager V2 (Windows®)

Configure several scan to options using the direct scan button on the scanner.

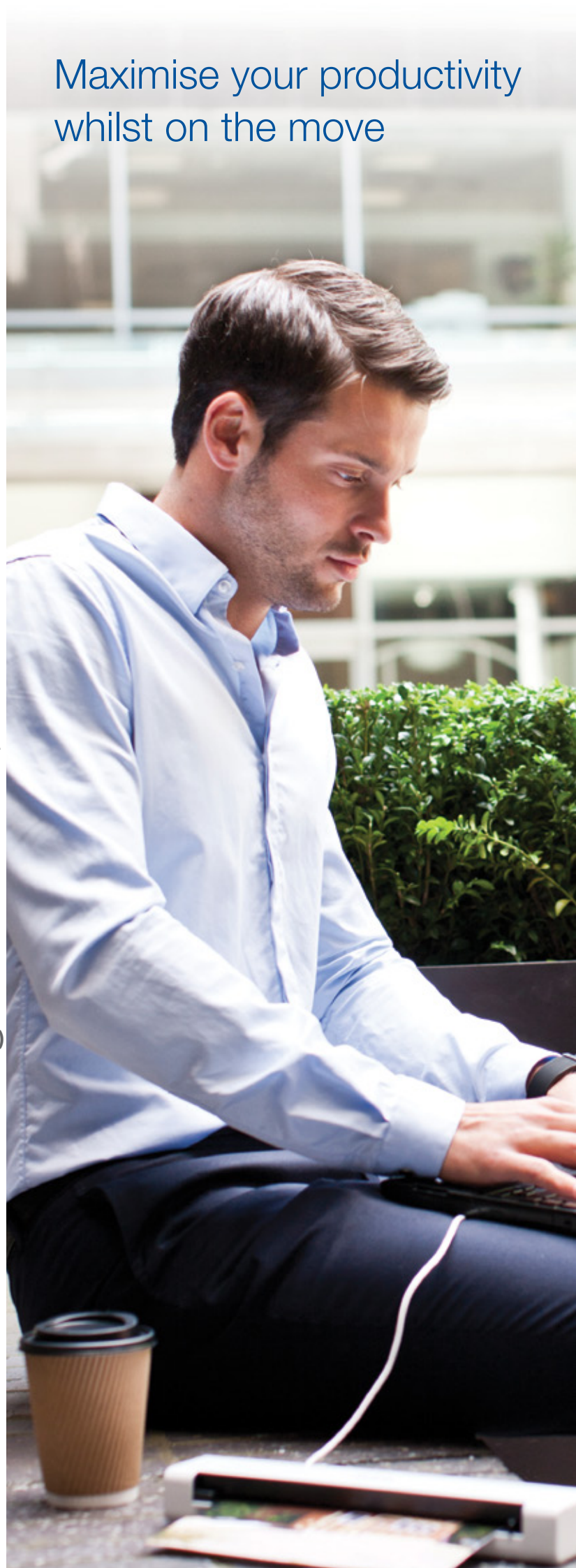
NewSoft® Presto!® BizCard 6 (Windows® and Mac)

Scan and export editable contact information directly to Microsoft® Outlook® and other contact management systems.

DSmobileCapture (Windows® and Mac)

A utility to capture and view scanned documents from your mobile scanner.

Maximise your productivity whilst on the move



DS-620

The Brother DS-620 mobile scanner is perfect for the mobile professional who needs a powerful scanner that will slide right into a briefcase or business bag. It's ideal for capturing business documents, as well as receipts, business cards, laminated identification cards, invoices, photographs, and more.



Versatile Media Handling



Fast Scan Speeds



High-Precision Scanning



Powered via the included USB Cable

Technical Specifications

General	
Image Sensor	CIS (Contact Image Sensor)
Paper Sensor	Electro-Mechanical
Interface	Hi-Speed USB 2.0
USB Cable	Included

Scanning	
Standard Mono & Colour Scan Speed	7.5 ppm (8 seconds) A4 at 300dpi
Resolution Optical	Up to 600 x 600 dpi
Resolution Interpolated	1200dpi
Colour Depth	48-bit internal & 24-bit external
Gray Scale	256 levels
Supported File Formats	JPEG, TIFF, & PDF (standard, searchable)
Scan to Destinations	Image, e-mail, file, app, printer, shared network folder, OCR, FTP, cloud and SharePoint®

Scanner Driver	
Windows®	TWAIN (Windows® 8, Windows® 7, Windows Vista® & Windows® XP)
Macintosh	TWAIN (Mac OS X 10.6.X, 10.7.X, 10.8.X)
Linux	TWAIN and Scan App

Software for Windows®	
DsMobileCapture	Easy to use scan software
Button Manager V2	One touch scanning to e-mail, File, app, folder, FTP or printer
Nuance™ PaperPort™ 12SE	Scan, share, search and organise documents on your PC Global business card management solution

Software for Mac	
DsMobileCapture	Easy to use scan software
NewSoft® Presto!® BizCard 6	Global business card management solution
PageManager 9	Document management & sharing program

Paper Handling	
Paper Input	1 sheet
Paper Sizes	Between 55mm - 215.9mm in width & 90mm - 812.8mm in length
Paper Weights	Between 60 g/m ² & 105 g/m ²

Weights & Dimensions	
With Carton	352(W)x 232(D)x 60mm(H) 980g
Without Carton	290.5(W)x 52.5(D)x 36.7(H) 400g

Environment	
Power Requirement	USB bus-power 5V DC
Power Consumption (Scanning)	2.5W
Power Consumption (Ready)	1W
Sound Pressure Level (Active)	50dBs

¹Requires software that comes bundled with the machine

Contact :

brother
at your side



facebook.com/brotheraustralia
www.brother.com.au