



KONICA MINOLTA

The essentials of imaging

The new PRO bizhub C5500

# Dependable colour

light production



**bizhub PRO C5500** 



## ➔ More than just flexible colour

The bizhub C5500 is designed for environments which need dependable digital colour in the CRD and specialised high-end office market. Satisfying the ever growing demand for high quality, performance and flexibility, Konica Minolta has introduced the C5500 which meets all these challenges.

- The bizhub PRO C5500 delivers identical fast 55 colour and b/w prints per minute. Featuring Konica Minolta's advanced colour processing technology, this colour production machine has been designed specifically to answer the essential requirements of CRDs and print providers with regard to quality, reliability, ease of use and economy.
- In the bizhub PRO C5500, extensive media flexibility combines with various in-line finishing capabilities.
- Convenient operation and ease of use are other attributes that were important development criteria. Additionally, the bizhub PRO C5500 excels with a remarkable registration accuracy which ensures perfect results in duplex printing, including brochures and booklets.
- Konica Minolta's CS Remote Care concept makes unplanned downtime a thing of the past for the bizhub PRO C5500. And its low overall running costs will surprise even those operating on a tight budget.
- The bizhub PRO C5500 offers a lot more than high-speed colour. Reaping the benefits of superior quality in combination with absolute reliability, print providers simply won't go wrong choosing Konica Minolta's dependable digital colour copier.



## ➔ Unique colour processing technology

Konica Minolta's advanced colour processing technology is an integral part of the bizhub PRO C5500. S.E.A.D. stands for "Screen-Enhancing Active Digital" processing and makes available a range of technical innovations which provide the bizhub PRO C5500's impressive colour reproduction capabilities at its high speed.

## Simitri HD<sup>®</sup> toner

- Simitri HD<sup>®</sup> polymerised toner enables print quality second to none with tiny, uniformly shaped particles
- perfect for professional mailings and leaflets because the print surface doesn't break or peel on the crease of folded pages
- oil-less fixing
  - low gloss surface enables handwriting on any document with a water-based pen
  - or place a stamp or adhesive note on the printed paper
- unparalleled colour fade resistance ensures longer-lasting prints of better quality than ever
- more environmentally friendly too!
  - reduced carbon dioxide, nitrogen oxide and sulphur oxide emissions generated in the manufacturing process

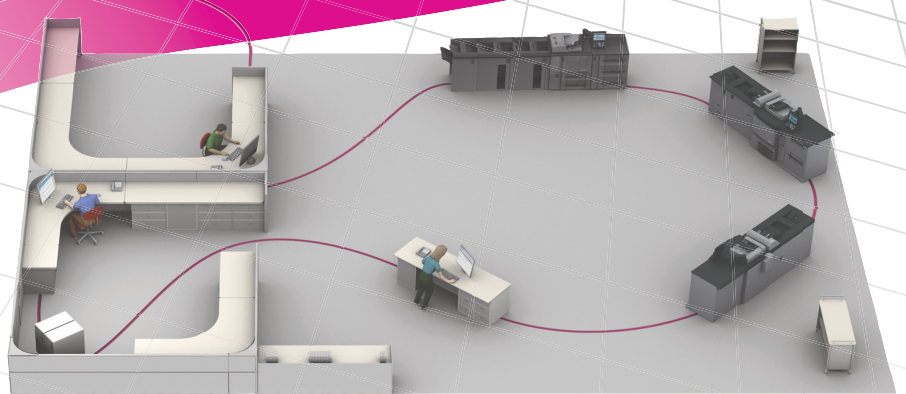
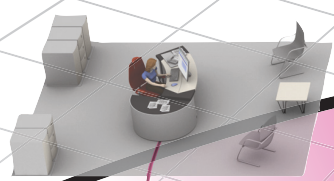


## ➔ **A total, simple, affordable solution for all your workflow issues only from Konica Minolta**

Why Printgroove? Because your customers expect fast, accurate, high-quality output. On busy days, print jobs can back up, last-minute changes can compromise delivery schedules. Your equipment is over-stressed or under-utilised and your staff are feeling the pressure to do more work in less time. Now, you'll have an automated solution to keep up with the rising production demands of your customers and ahead of your competitors.

- 24/7 Job Submission
- Auto Job Ticketing
- Quoting and Scheduling
- Email Notification
- Files in any format
- Queue
- Device Monitoring
- Shipping and Billing
- Data Archiving

- With its unique combination of fast colour and mono speed, plus the extensive media flexibility, superior image quality and workflow software, the bizhub PRO C5500 helps reduce the pressure in busy print rooms. An impressive range of features and functionalities increases user convenience and facilitates the fast processing of jobs. Offering sustainable, reasonable running costs, Konica Minolta's highly dependable colour production system ensures competitiveness for CRDs and high-end specialised office users that strive to produce perfect, high-quality results in a controlled office environment.





## ➔ Impressive media flexibility

Paper processing in the bizhub PRO C5500 is fast and ultra-smooth. Thanks to Konica Minolta's "air-assist" paper feeding technology, its media flexibility is extensive incl. up to 300 gsm coated paper. With max. 4,250 pages input capacity, the bizhub PRO C5500 easily handles long print runs and continuous production. Advanced features like mixplex and mixmedia guarantee professional results also for complex print jobs.

## High monthly output

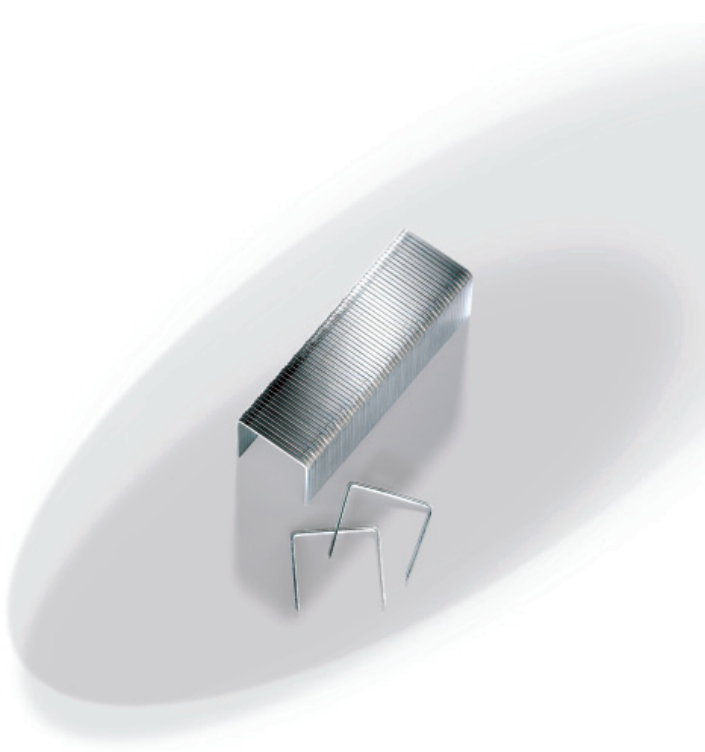
- With the bizhub PRO C5500, short-run printing is fast and keeps short turnaround times easy! Its output capacity is up to 55 colour or b/w pages per minute and it has a productive paper and toner refill on-the-fly functionality.

## Absolute precision

- The bizhub PRO C5500's back-to-front and page-to-page registration ensures a degree of precision. Thanks to these advanced capabilities, the bizhub PRO C5500 excels, in particular, in the production of faultless booklets and brochures – but is, of course, just as suited to other complex jobs.

## Complete reliability

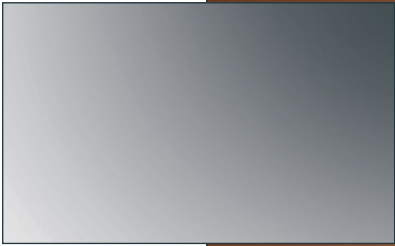
- Professional users must be able to fully rely on their equipment – the bizhub PRO C5500 does not let anyone down! And the machine's complete dependability is further enhanced with Konica Minolta's remote diagnostics system. Providing pro-active and highly flexible service support, CS Remote Care helps to keep output devices running smoothly, minimising interruptions and maximising system availability. All relevant system data is transmitted directly to the Konica Minolta service team in an automated process that never needs user intervention.



## ➔ In-line finishing

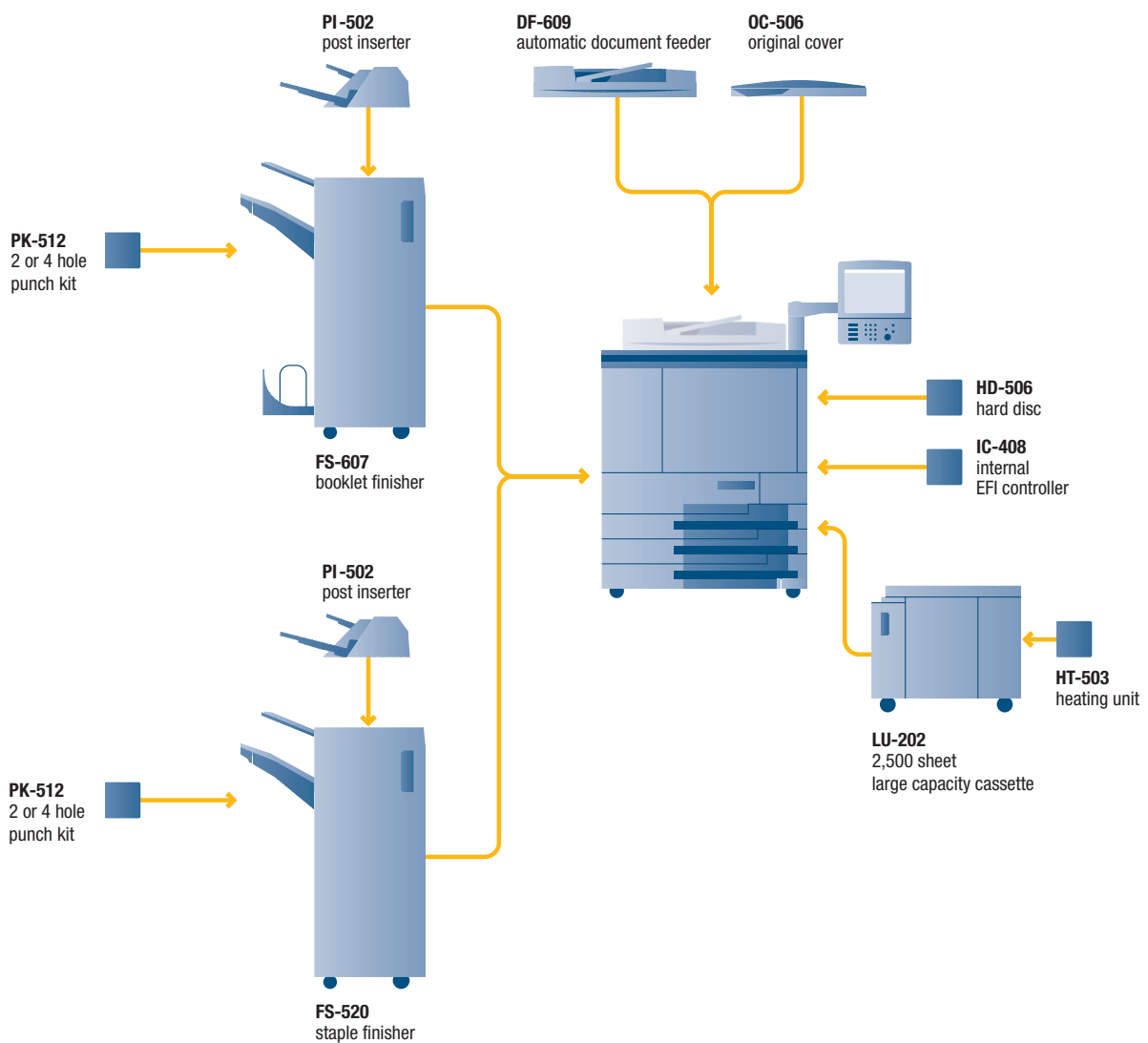
- Both the booklet finisher and a staple finisher which is available as an alternative, provide multi-position stapling for up to 50 sheets per stapled set.
- A letter-folding function for sets of up to 3 sheets offers extra flexibility and is particularly attractive for the fully automatic production of mailings.
- In addition, in-line punching of 2 or 4 holes is available as an optional upgrade to the booklet and the staple finisher.
- With the help of a post inserter, pre-printed covers can automatically be added to documents while printed on the bizhub PRO C5500. Available for both finishers.
- For a truly professional impression of the final print product, a superior image quality is essential – but so are an exceptional media quality and the professional finishing of the printed output. Naturally Konica Minolta has ensured that the bizhub PRO C5500 also meets the highest demands in this respect, offering a choice of sophisticated in-line finishing functions that further enhance its capabilities.





# COPYK

## ➔ Configuration guide



## → Technical specifications

### Copier specifications

#### Copy speed

55 cpm (A4)  
33 cpm (A3)

#### Copy resolution

600 x 600 dpi

#### 1st copy/print

6.5 sec. (colour A4)

#### Gradations

256 gradations

#### Magnification

25–400% in 0.1% steps

#### Multiple copies

1–9,999, countdown, interruption mode

#### Copy memory

Standard: 4x 256 MB  
Max.: shared with copier HDD

#### Copier HDD

4x 40 GB

### Printer specifications

#### Print speed

55 ppm (A4)  
33 ppm (A3)

#### Print resolution

Max.: 600 x 1,800 dpi

#### IC-408 (Internal EFI Fiery Controller)

**Page description language**  
PostScript 3, PCL\*, TIFF, PDF  
Colour Profiler

#### Printer driver

Windows 2000/XP/Server 2003  
Mac OS X

#### CPU

Intel Celeron 2.8 GHz

#### Standard software utilities

Command workstation  
Colourwise  
Web tools  
Remote scan  
Desktop SE  
Spot on 'Spot Colour Management'

#### Interface

Ethernet (10/100/1000-Base-T)

#### Print memory

Standard: 512 MB

#### Printer HDD

80 GB

#### Optional software utilities

Secure Erase  
Hot Folder  
Auto Trapping  
Impose 2.6

### Scanner specifications

#### Scan speed

39 opm (A4)  
22 opm (A3)

#### Scan resolution

600 x 600 dpi

#### Scan modes

TWAIN scan  
Scan-to-eMail  
Scan-to-FTP  
Scan-to-SMB  
Scan-to-HDD

#### Scan formats

TIFF (single and multipage), PDF

### System specifications

#### Automatic document feeder

Up to 100 originals  
35–210 gsm

#### Paper weight

64–256 gsm  
Up to 300 gsm  
(from bypass or LU-202)

#### Paper size

A5–SRA3 (330 x 487 mm)

#### Maximum image area

318 x 480 mm

#### Duplex unit

Non-stack type  
64–256 gsm

#### Paper input capacity

Standard: 4,250 sheets (with LU-202)

#### Large capacity cassette

1 magazine  
Up to 2,500 sheets paper capacity  
Up to 300 gsm

#### Paper output capacity

Main tray max.: 3,000 sheets  
Per sub tray max.: 100 sheets

#### Booklet Finisher FS-607 (Option)

Booklet making for up to 20 sheets  
(80 images)  
2-point and corner stapling  
Stapling up to 50 sheets  
Centre fold and letter fold in  
Auto-shift sorting and grouping  
Output for up to 2,500 sheets  
Sub tray for up to 100 sheets

#### Staple Finisher FS-520 (Option)

2-point and corner stapling  
Stapling up to 50 sheets  
Auto-shift sorting and grouping  
Output for up to 3,000 sheets  
Sub tray for up to 100 sheets

#### Post Inserter PI-502

(Option for FS-607/FS-520)  
Pre-printed sheet insertion  
2 PI trays for 200 sheets each

#### Punch kit PK-513

(Option for FS-607/FS-520)  
Punching (4 holes)

#### Warm-up time

Less than 420 sec.

#### Main unit dimensions

(W x D x H mm)  
786 x 1,056 x 992 (Main unit +  
OC-506)

#### Main unit weight

360 kg (only main unit)

#### Software



Printgroove

Printgroove GUIDE

Printgroove READY

Printgroove QUEUE

Darwin  
DirectSmile

All specifications relating to paper capacity refer to A4-size paper of 80 gsm quality.

All specifications relating to scanning, copying or printing speeds refer to A4-size paper that is scanned, copied or printed crosswise in multipage, simplex mode.

Some of the product illustrations contain optional accessories.

Konica Minolta does not warrant that any prices or specifications mentioned will be error-free.

Specifications are subject to change without notice.

Microsoft, Windows and the Windows logo are trademarks, or registered trademarks, of Microsoft Corporation in the United States and/or other countries.

All other brand and product names may be registered trademarks or trademarks of their respective holders and are hereby acknowledged.

Printed in the UK on Revive Silk, a paper containing a minimum of 75% post consumer de-inked recycled waste, using soya based mineral-oil free inks.



When you have finished with  
this brochure please recycle it

75% recycled

This brochure is printed  
on 75% recycled paper



Simitri HD  
High Definition Polymerised Toner



CITRIX





KONICA MINOLTA

# Designed to change the way you do business.

## bizhub PRO C5500 at a glance

FUNCTION	STANDARD	OPTIONAL	COMMENT
Mono Print/Copy	✓		55 A4 ppm
Colour Print/Copy	✓		55 A4 ppm
Automatic Document Feeder	✓		100 Originals
Paper Capacity	✓		3 x 500 sheets 64 – 256 gsm
Automatic Duplex Unit	✓		256 gsm up to SRA3
Bypass	✓		250 sheets 64 – 300 gsm
2,500 Sheet Large Capacity Tray		✓	SRA3 64 - 300 gsm
Punch Unit		✓	2 or 4 hole punch selectable
Finishing		✓	Offset, Group, Sort, Staple, Punch, Centre Fold, Letterfold, Booklet
Post Inserter 2 Trays		✓	Pre Printed Sheet Insertion
Fiery Controller Internal		✓	PostScript3, PCL, TIFF, PDF

Your Konica Minolta Business Solutions Partner:



**Konica Minolta**  
**Business Solutions (UK) Ltd**  
 Precedent Drive, Rooksley  
 Milton Keynes MK13 8HF  
 Tel: 01908 200400  
 Email: info@bs.konicaminolta.co.uk

