

# MC160 Color MFP

**OKI**<sup>®</sup>  
PRINTING SOLUTIONS



**Best-in-class features and affordable color MFP versatility for small workgroups**





## The MC160 Color MFP from OKI Printing Solutions has the features you and your small workgroups want and need most.

### MC160 Color MFP Highlights:

- Professional, affordable solution—versatile, reliable and simple to operate
- Print, copy, scan and fax with one device
- Productivity-enhancing features include:
  - Fast black & white printing/copying: up to 20 ppm (up to 5 ppm color)<sup>1</sup>
  - High duty cycle for greater reliability: rated at 35,000 pages per month
  - Large paper capacity: up to 700 sheets<sup>2</sup>
  - Large toner capacity: up to 2,500 pages each in Cyan, Magenta, Yellow and Black<sup>3</sup>
  - Exceptional media flexibility: accepts stock up to 110 lb. index (209 gsm)<sup>4</sup>
- Dual-access fax functionality<sup>5</sup>
- Scan to USB Flash drive via convenient front port
- 35-sheet automatic document feeder (ADF)
- Duplex (2-sided) printing optional
- Compact desktop design, ideal for small or very small workgroups
- 1-Year limited warranty with Overnight Exchange<sup>6</sup>
- Live, toll-free technical support 24/7/365<sup>6</sup>

### Bring the all-in-one functionality of the MC160 Color MFP to your small workgroups

– The affordable and versatile MC160 MFP from OKI Printing Solutions combines color and mono printing, copying and scanning (with convenient scan-to capabilities), and Super G3 faxing.

It also has a wide range of productivity-enhancing features that make it a competitive stand-out.

**Increase your productivity in so many ways** – With the MC160 Color MFP, you can get up to 20 crisp, clear black & white prints or copies per minute, and up to 5 ppm in professional business color when you want it. The 35,000-page monthly duty cycle means the MC160 Color MFP will produce those pages with unmatched reliability.

To decrease user intervention, the MC160 Color MFP has a maximum paper capacity of 700 sheets (200-sheet standard capacity plus a 500-sheet optional 2nd paper tray), and will hold 2,500-sheet Black and Color toner cartridges.<sup>3</sup> It won't jam on heavier weight stock, since it can handle up to 110 lb. index (209 gsm).<sup>4</sup> And it's available with a duplex (2-sided) printing option that helps save paper.

**Scan to a USB Flash drive** – The MC160 Color MFP is designed to let you get more done in less time. Have a document you need to scan quickly and transport as a digital file? Simply insert a USB memory stick into the USB port conveniently located on the front of the MC160 Color MFP, and place your document on the flatbed platen or in the 35-sheet automatic document feeder (ADF). Scan it as a black & white or color PDF, save it to the memory stick, and you're on your way in seconds.

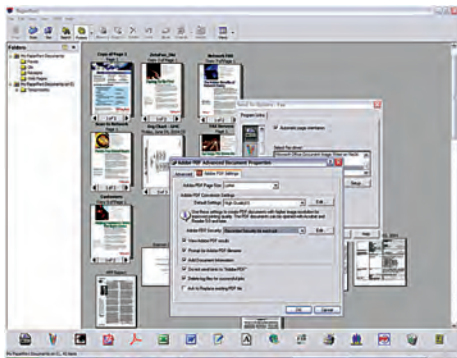
In addition, the MC160 Color MFP's standard dual-access fax functionality lets you scan faxes into memory while the unit is busy sending or receiving faxes.



Easy-to-use operator panel with LCD display and alphanumeric keypad.

# Features that let you better manage your hardcopy documents, your time, even your bottom line.

**Document management is a snap** – Among the utilities that come standard with the MC160 Color MFP is PaperPort® by Nuance®. This award-winning scanning and document management application turns paper into digital content. With its intuitive, thumbnail-based interface, PaperPort lets you take any scanned document, save it in a PDF format, and quickly make it available for archiving or sharing.



**PaperPort is an award-winning scanning and document management application that turns paper into digital content.**



**Scan to a USB Flash drive via the convenient front port. Pop it in, complete the process, pop it out—and you're on your way.**

**Improve your bottom line** – The MC160 Color MFP delivers cost-effective operation as well as an exceptional return on your investment. Its outstanding reliability and long-lasting consumables help you control operating costs and improve productivity:

- Support one device rather than several
- Stock fewer replacement supplies
- Reduce user interventions

What's more, the compact desktop MC160 Color MFP is designed to make changing its cost-efficient consumables quick, clean and easy.

**Feel like a customer again** – OKI Printing Solutions understands the needs of today's businesses. We listen to our end users and offer the solutions that can increase their performance while improving their bottom line.

We also provide live technical support, 24/7/365, with experts located in North America<sup>6</sup>, because we want to keep you up and running. Just another reason why you can always expect more from OKI Printing Solutions and our full line of Color MFPs.

**The MC160 Color MFP from OKI Printing Solutions: best-in-class features and affordable color MFP versatility for small workgroups.**

## MC160 MFP at a Glance:

Easy-to-use operator panel with LCD display and alphanumeric keypad

Dual access fax functionality

Available with 1,500 and 2,500-page CMY and 2,500-page Black toner cartridges<sup>3</sup>

128 MB RAM memory

200-sheet standard paper capacity

Optional 500-sheet 2nd paper tray



35-sheet Automatic Document Feeder (ADF) or flatbed input

600 x 600 dpi scanning resolution

1200 x 600 dpi print resolution

Convenient front USB v1.1 port for scan-to-USB memory

Optional duplex (2-sided) printing

<sup>1</sup> Published performance results based on laboratory testing. Individual results may vary.

<sup>2</sup> With optional 500-sheet 2nd paper tray.

<sup>3</sup> Based on 5% coverage, letter-size sheets. Standard Color (CMY) cartridges are 1,500 pages; Black cartridge is 2,500 pages. Unit ships with 500-page Color and 1,000-page Black "starter" toner cartridges.

<sup>4</sup> Through main paper tray.

<sup>5</sup> Allows users to scan faxes into memory while the unit is busy sending or receiving faxes.

<sup>6</sup> Available in the U.S. and Canada only.

# MC160 Color MFP

## Specifications

### Printer

- **Print Speed:** Up to 5 ppm color, 20 ppm black & white<sup>1</sup>
- **Time to First Page:** 23 sec. color, 14 sec. black & white<sup>1</sup>
- **Print Resolution:** Up to 1200 x 600 dpi
- **Processor:** 120 MHz
- **Duty Cycle:** 35,000 prints/copies per month
- **Connectivity:** USB v2.0 high-speed; 10/100 Base-TX Ethernet (network)
- **Emulations:** Enhanced Windows® Printing (GDI)
- **Operating Systems:** Windows® 7/Windows 7 x64, Vista®/Vista x64, XP/XP x64, Server 2008/Server 2008 x64/Server 2008-R2, Server 2003/Server 2003 x64, 2000; Mac® OS 10.3 and higher
- **Fonts:** Through Host PC

### Copier

- **Copy Speed:** Up to 3.3 cpm color, 20 cpm black & white<sup>1</sup>
- **First Copy Out Time:** 52 sec. color, 23 sec. black & white<sup>1</sup>
- **Copy Resolution:** Up to 600 x 600 dpi
- **Density:** 7 levels
- **Copy Scaling:** 50% to 200%
- **Copy Quantity Selection:** 1-99
- **Copy Functions:** ID card copy; Poster copy; Repeat copy

### Scanner

- **Scan Type:** Color and black & white flatbed
- **ADF:** 35-sheet
- **Scan Resolution:** Up to 300 x 300 dpi
- **Scan-to-PC:** Create electronic file from hard copy original with Nuance® PaperPort® SE 11 software
- **Address Book Management:** LDAP (Lightweight Directory Access Protocol)
- **Scan-to Functionality:** Scan to e-mail with LDAP support; to USB memory stick; to FTP sites; to network; and to PC
- **Formats Supported:** PDF, TIFF, JPEG
- **TWAIN/WIA Driver:** Windows 2000 and higher
- **Networking Utilities:** MFP Network Tools – access features and settings of the MFP; set up Scan-to-FTP and Scan-to-Email

### Fax

- **Fax Modem:** 33.6 Kbps Super G3
- **Transmission Speed:** 3 seconds/page<sup>2</sup>
- **Fax Resolution:** Up to 203 x 392 dpi
- **Speed Dials:** 250 locations
- **Broadcast Transmissions:** Up to 236 locations
- **Fax Memory:** Approx. 384 pages<sup>2</sup> (6 MB)
- **Fax Functions:** Dual access, Tel/Fax auto switching, Broadcasting, Manual transmission, Delayed transmission, Auto redial, Auto receive, Activity report (sending/receiving)

## Productivity Enhancements

- **Fax Dual Access Functionality:** Allows users to scan faxes into memory while the unit is busy sending or receiving faxes.
- **Multi-tasking Functionality:** Enables two tasks to be performed at once (tasks are automatically performed in order, not necessarily simultaneously)

## Document Management

- **Utility Suite:** Setup Utility, Scanner Utility, TWAIN/WIA Driver, TWAIN Driver (Mac OS), Fax Driver, PC Fax Driver, Printer Driver, PrintSuperVision

## System Memory

- **Imaging RAM:** 128 MB

## Paper Handling

- **Scanner ADF:** Up to 35 letter/legal sheets (16 lb. – 28 lb.)
- **Paper Sizes (Min./Max.):** Main tray – from 3.6" x 7.24" to 8.5" x 14"; Optional 2nd tray – Letter/A4 only
- **Standard/Max Input:** 200 sheets via Main tray; 700 sheets with optional 500-sheet 2nd tray
- **Output Capacity:** Up to approx. 100 sheets
- **Duplex (2-Sided) Printing:** Optional
- **Paper Sizes:** Letter, Legal, Executive, Statement, A4, A5, B5, Custom (Plain paper: 3.6" x 7.7" – 8.5" x 14"; Thick stock: 3.6" x 7.25" – 8.5" x 11.7")
- **Paper Weight:** Main tray 16 lb. bond – 110 lb. index (60–209 gsm); Optional 2nd trays 16 lb. – 24 lb. bond (60–90 gsm)

## Environmental

- **Size (WxDxH):** 15.9" x 16.8" x 17.0" (40.5 cm x 42.7 cm x 43.2 cm)
- **Weight:** 41.5 lb. (18.8 kg) with consumables
- **Power Consumption:** Operating Normal up to 560W, Max 1,060W; Idle ≤170W; Power Save ≤14W
- **Acoustic Noise:** Operating (Printing/Scanning/Copying) ≤55 dB; Standby ≤38 dB

## Warranty

- **System:** 1-Year limited warranty with Overnight Exchange<sup>3</sup>

For more information on the MC160 MFP Color Multifunction Product and supplies—including OKIcare warranty extensions—please call **1.800.OKI.DATA** (800.654.3282)<sup>3</sup> or visit our website: [www.okiprintingsolutions.com/us](http://www.okiprintingsolutions.com/us)



MC160 MFP shown with optional duplex unit



Ordering Information	
Description	Part Numbers
MC160 MFP, 120V (Multilingual)	44292401
MC160 MFP, 230V (Multilingual)	44292402
<b>Options</b>	
500-Sheet 2nd Paper Tray – Letter	44244902
500-Sheet 2nd Paper Tray – A4	44244901
Duplex Unit	44244801
<b>Supplies</b>	
<b>Standard Toner Cartridges:</b>	
Cyan Toner Cartridge	1,500 pg. <sup>4</sup> 44250711
Magenta Toner Cartridge	1,500 pg. <sup>4</sup> 44250710
Yellow Toner Cartridge	1,500 pg. <sup>4</sup> 44250709
<b>High-Capacity Toner Cartridges:</b>	
Cyan Toner Cartridge	2,500 pg. <sup>4</sup> 44250715
Magenta Toner Cartridge	2,500 pg. <sup>4</sup> 44250714
Yellow Toner Cartridge	2,500 pg. <sup>4</sup> 44250713
Black Toner Cartridge	2,500 pg. <sup>4</sup> 44250716
<b>Image Drum Kit:</b>	
Drum/Waste Toner Box	
Color	9,600 pg.
Black & White <sup>5</sup>	20,800 pg. 44250801

<sup>1</sup> Published performance results based on laboratory testing. Individual results may vary.

<sup>2</sup> Based on ITU-T Test Chart #1.

<sup>3</sup> Available in the U.S. and Canada only.

<sup>4</sup> Based on 5% coverage on Letter-size sheets. Unit ships with 500-page Color (CMY) and 1,000-page Black starter toner cartridges.

<sup>5</sup> Includes waste toner box. Estimated life based on 3 pages/job.

Specifications are subject to change without notice.

Featured products may not be available in all countries. Please contact your local office for regional availability.

©2010 OKI Data Americas, Inc. OKI Reg. T.M., M.D., OKI Electric Industry Co., Ltd. Windows, Vista Reg. T.M., Microsoft Corp. Mac Reg. T.M., Apple, Inc. USB-IF T.M., Universal Serial Bus Implementers Forum, Inc.

## OKI DATA AMERICAS, INC.

USA  
2000 BISHOPS GATE BLVD.  
MOUNT LAUREL, NJ 08054-4620  
TEL: 800.OKI.DATA (800.654.3282)  
FAX: 856.222.5320

CANADA  
4140B SLADEVIEW CRESCENT  
UNITS 7 & 8  
MISSISSAUGA, ONTARIO L5L 6A1  
TEL: 905.608.5000  
FAX: 905.608.5040

LATIN AMERICA  
2000 BISHOPS GATE BLVD.  
MOUNT LAUREL, NJ 08054-4620  
TEL: 856.231.0002  
FAX: 856.222.5071

OKI DATA DE MÉXICO, S.A. DE C.V.  
MARIANO ESCOBEDO, 748 8<sup>º</sup> PISO  
COL. NUEVA ANZURES C.P. 11590  
MÉXICO, D.F.  
TEL: 55.5263.8780  
FAX: 55.5250.3501

OKI DATA DO BRASIL INFORMÁTICA LTDA.  
AV. ALFREDO EGÍDIO DE SOUZA ARANHA, 100  
BLOCO C – 4<sup>º</sup> ANDAR  
04726-170 – SÃO PAULO – SP – BRASIL  
TEL: 11.3444.3500  
FAX: 11.3444.3502

[WWW.OKIPRINTINGSOLUTIONS.COM](http://WWW.OKIPRINTINGSOLUTIONS.COM)