

# C5650 Series

## Specifications

### Performance

- **Print Speed:** Up to 22 ppm Color; up to 26 ppm Mono<sup>1</sup>
- **Time to First Page:** 11 sec. Color; 8 sec. Mono<sup>1</sup>
- **Processor:** 264 MHz PowerPC CPU
- **HD Color Printing Technology:** Combines multilevel LED printheads and microfine toner for sharp detail and rich color depth
- **Print Resolution:** 1200 x 600 dpi
- **Duty Cycle:** Up to 60,000 pg./mo.

### Productivity Solutions

- **Web-based Printer Management:** PrintSuperVision and OkiLAN® Embedded Web Server

### Compatibility

- **Emulation:** Enhanced Windows® Printing (GDI)
- **Operating Systems:** Windows Vista®, XP, 2003 Server, 2000 (all 32- and 64-bit); Mac® OS X 10.2.8 and higher; UNIX®; Linux

### Connectivity

- **Network Interface:** OkiLAN® 10/100 Base-T Internal Ethernet Print Server
- **Local Ports:** High-speed USB v2.0

### Memory

- **Standard:** 64 MB
- **Maximum:** 320 MB

### Typefaces

- **Scalable:** Utilizes fonts installed on host computer (Windows or Mac)

### Paper Handling

- **Paper Input:** 400 sheets standard (300-sheet Legal/Letter/Universal Tray and 100-sheet Multi-Purpose Tray); 930 sheets max. with optional 530-sheet 2nd Paper Tray
- **Multi-Purpose Tray:** Standard 100-sheet; handles overhead transparencies, envelopes, photo sizes (4" x 6", 5" x 7"), mailing label stock, 3" x 5" cards, and banners up to 48" long

- **Duplex (2-Sided) Printing:** Standard on C5650dn, optional on C5650n
- **Paper Sizes (Min / Max):** Main Tray 4.1" x 5.8"/8.5" x 14"; optional 2nd Tray 5.8" x 8.3/8.5" x 14"; Multi-Purpose Tray 3" x 5"/8.5" x 48" banner
- **Paper Weight:** Main Tray 20 lb. – 32 lb. bond (75 – 120 gsm); optional 2nd Tray 20 lb. – 47 lb. bond (75 – 176 gsm); manual feed 20 lb. bond – 54 lb. bond/110 lb. index (75 – 203 gsm); duplex 20 lb. – 28 lb. bond (75 – 105 gsm)

### Environmental

- **Size (WxDxH):** 17.1" x 22.1" x 13.4" (43.5 cm x 56.1 cm x 34.0 cm)

- **Weight:** Printer only – 57.0 lb. (28.7 kg)

### Supplies

- **Toner Cartridges and Image Drums:** Separate Black, Cyan, Magenta and Yellow
- **Toner Cartridge Life:** 2,000/5,000 pages at approx. 5% density<sup>2</sup>
- **Image Drum Life:** Approximately 20,000 pages<sup>3</sup>

### Warranty

- **Printer:** 1-Year limited with Overnight Exchange<sup>4</sup>
- **Digital LED Printheads:** 5-Year limited warranty

For more information on Digital Color Printers and supplies from OKI Printing Solutions, including OKIcare® Extended Service Programs<sup>4</sup>: **1-800-OKI-DATA (800-654-3282)**.

<sup>1</sup> Published performance results based on laboratory testing. Individual results may vary.

<sup>2</sup> Toner cartridges have an estimated life based on 5% coverage of letter-size pages. Printers ship with 1,500-page "starter" toner cartridges. Standard 2,000-page and high-capacity 5,000-page toner cartridges are available.

<sup>3</sup> Estimated life, based on 3 pages per job.

<sup>4</sup> Available in the U.S. and Canada only.

Specifications are subject to change without notice.

© 2008 Oki Data Americas, Inc. OKI Reg. T.M., M.D. M.R., OkiLAN Reg. T.M., Oki Electric Industry Co., Ltd. Single Pass Color T.M. and design Reg. T.M., Oki Data Corp. SynFlex, Overnight Exchange logo T.M., Oki Data Americas, Inc. Windows, Vista Reg. T.M., Microsoft Corp. Mac Reg. T.M., Apple Inc. USB-IF logo T.M., Universal Serial Bus Implementers Forum, Inc.

## Ordering Information

Description	Part Numbers	
C5650n 120V (Multilingual)	62430501	
C5650n 230V (Multilingual)	62430502	
C5650dn 120V (Multilingual)	62430503	
C5650dn 230V (Multilingual)	62430504	
<b>Options</b>		
530-sheet 2nd Paper Tray	43347601	
Duplexer (2-sided Printing) Unit	43830001	
Memory Expansion: 64 MB	70057501	
Memory Expansion: 256 MB	70057601	
<b>Supplies</b>		
<b>Toner Cartridges:</b>		
Cyan Toner Cartridge	2,000 pg. <sup>2</sup>	43381903
Magenta Toner Cartridge	2,000 pg. <sup>2</sup>	43381902
Yellow Toner Cartridge	2,000 pg. <sup>2</sup>	43381901
Black Toner Cartridge	2,000 pg. <sup>2</sup>	43381904
Cyan Toner Cartridge	5,000 pg. <sup>2</sup>	43324403
Magenta Toner Cartridge	5,000 pg. <sup>2</sup>	43324402
Yellow Toner Cartridge	5,000 pg. <sup>2</sup>	43324401
Black Toner Cartridge	5,000 pg. <sup>2</sup>	43324404
<b>Image Drum Kits:</b>		
Cyan Image Drum Kit	20,000 pg. <sup>3</sup>	43381703
Magenta Image Drum Kit	20,000 pg. <sup>3</sup>	43381702
Yellow Image Drum Kit	20,000 pg. <sup>3</sup>	43381701
Black Image Drum Kit	20,000 pg. <sup>3</sup>	43381704
<b>OKIcare® Overnight Exchange Warranties<sup>4</sup></b>		
	<b>U.S.</b>	<b>Canada</b>
C5650 Srs. 2-Yr Warranty	38000401	38000411
C5650 Srs. 3-Yr Warranty	38000402	38000412
<b>OKIcare® On-Site Warranties<sup>4</sup></b>		
	<b>U.S.</b>	<b>Canada</b>
C5650 Srs. Upgrade to On-Site	38000403	38000413
C5650 Srs. 2-Yr On-Site Wty.	38000404	38000414
C5650 Srs. 3-Yr On-Site Wty.	38000405	38000415
<b>Print Media</b>		
<b>Sheets Per Box</b>		
Bright White Proofing Sheets (32 lb.):		
8.5" x 11"	500	52206101
Premium Color Transparency Film		
	50	52205701
Premium Card Stock (8.5" x 11"):		
60 lb. Cover	250	52205601
90 lb. Index	250	52205602
110 lb. Index	250	52205603
SynFlex™ Paper (Waterproof and Tear-resistant):		
8.5" x 11"	100	52205901
Premium Envelopes (size #10):		
	100	52206301
	500	52206302
Banner Paper (8.5" x 35.4")	100	52206002



## OKI DATA AMERICAS, INC.

**USA**  
2000 BISHOPS GATE BLVD.  
MOUNT LAUREL, NJ 08054-4620  
TEL: 800.OKI.DATA (800.654.3282)  
FAX: 856.222.5320

**CANADA**  
2735 MATHESON BLVD. EAST  
MISSISSAUGA, ONTARIO L4W 4M8  
TEL: 905.238.4250  
FAX: 905.238.4421

**LATIN AMÉRICA**  
2000 BISHOPS GATE BLVD.  
MOUNT LAUREL, NJ 08054-4620  
TEL: 856.231.0002  
FAX: 856.222.5071

**OKI DATA DE MÉXICO, S.A. DE C.V.**  
MARIANO ESCOBEDO, 748 8º PISO  
COL. NUEVA ANZURES C.P. 11590  
MÉXICO, D.F.  
TEL: 55.5263.8780  
FAX: 55.5250.3501

**OKI DATA DO BRASIL INFORMÁTICA LTDA.**  
AV. ALFREDO EGÍDIO DE SOUZA ARANHA, 100  
BLOCO C – 4º ANDAR  
04726-170 – SÃO PAULO – SP – BRASIL  
TEL: 11.3444.3500  
FAX: 11.3444.3502

WWW.OKIPRINTINGSOLUTIONS.COM

**C5650 Series**

**OKI**<sup>®</sup>  
PRINTING SOLUTIONS



**Exceptional workgroup reliability and  
HD Color without compromise**

**C5650n  
C5650dn**





## The C5650 Series from OKI Printing Solutions enhances productivity through increased speed and media flexibility.

### Highlights:

- HD Color Printing technology for sharp detail and rich, dramatic color
- Color output at up to 22 ppm; black & white at up to 26 ppm<sup>1</sup>
- Time to first page as fast as 11 seconds color, 8 seconds black & white<sup>1</sup>
- 1200 x 600 dpi resolution
- 10/100 Base-T Network and high-speed USB v2.0 connectivity, standard
- Paper capacity expandable to 930 sheets; memory expandable to 320 MB
- C5650dn with duplex (2-sided) printing standard (optional on C5650n)
- Space-saving footprint for desktop use
- Single Pass Color™ Digital technology for printing up to 110 lb. index stock (203 gsm) and banners up to 4 feet long
- Convenient operator panel provides status, enables printer and network settings changes
- High-capacity, 2-piece consumables for low Total Cost of Ownership in color and mono<sup>2</sup>
- 1-Year limited warranty with Overnight Exchange on printer<sup>3</sup>; 5-Year limited warranty on LED printheads
- Live, toll-free technical support 24/7/365<sup>3</sup>

### Perfect for growing businesses with Windows-based environments

**For small workgroups demanding superior quality at an affordable price, OKI Printing Solutions brings you the C5650 Series Digital Color printers.** Network-ready, they combine fast printing speed, incredible print quality, the ability to print on a wide variety of media, and the legendary reliability of OKI Printing Solutions products backed by industry-leading support.

**22 ppm Color printing, among the fastest in their class** – The C5650 Series delivers crisp, bright, color output, with the first page printing in as little as 11 seconds. Black & white pages print at up to 26 ppm, the first in as little as 8 seconds.

For 2-sided color, the duplex unit (standard on the C5650dn; optional on the C5650n) will deliver your documents at nearly the same productivity-enhancing speeds.<sup>1</sup>

**Exceptional paper handling** – C5650 Series printers have a standard paper capacity of 400 sheets: a 300-sheet paper tray plus built-in 100-sheet multi-purpose tray for labels, envelopes, transparencies, and index stock up to 110 lb. Use them to print everything from 3" x 5" cards to banner-size sheets up to 8.5" x 48".

The more sheets a printer holds means fewer user interventions, so the C5650 Series can further increase your productivity: its paper capacity expands to 930 sheets with an optional 530-sheet 2nd paper tray.

**Small workgroup connectivity built in** – Share the advantages and efficiencies of the C5650 Series printers through an internal OkiLAN® 10/100 Base-T print server, or make them personal printers by connecting via the high-speed USB v2.0 port.

**Unmatched warranty support** – We're so confident in the reliability of the C5650 Series that we provide an industry-leading 5-year warranty on printheads, and a 1-year limited printer warranty with Overnight Exchange and optional coverage extensions.<sup>3</sup>

Of course, if you need technical assistance, you can speak to a live expert located in North America by calling **800.OKI.DATA** (800.654.3282) at any time.<sup>3</sup>

**If you need high-speed, highly flexible printers to increase your productivity as your business grows, the C5650 Series from OKI Printing Solutions is your ideal choice.**

<sup>1</sup> Published performance results based on laboratory testing. Individual results may vary.

<sup>2</sup> Printers ship with set of 1,500-page "starter" toner cartridges. 2,000-page and 5,000-page replacement toner cartridges are available.

<sup>3</sup> Available in the U.S. and Canada only.

# With HD Color output, the C5650 Series produces exceptional business color documents, even on ordinary office paper.

**High Definition (HD) Color printing technology** – For print quality that visibly enhances your documents, C5650 Series printers render deeper, more saturated colors, finer detail, and more precise toner placement than ordinary color printers.

This unique four-part process delivers fast, high-quality printing with breathtaking output. It combines four technologies from OKI Printing Solutions:

- Multilevel LED printheads:** systematically control the amount of toner applied to each dot—increasing the color intensity.
- Microfine toner:** the large color gamut and pigment density of OKI® color toner ensures that printed documents are sharp, crisp and glossy.
- Single Pass Color™:** the paper media follow a streamlined path, passing beneath four in-line printheads. Simple, effective, fast.
- Printer control system:** software and firmware that provide automatic adjustments and alignments for optimum print quality every time.

Along with 1200 x 600 dpi resolution, the HD Color printing technology of the C5650 Series Digital Color printers provides greater depth of detail and color, and a high gloss finish, even on ordinary office paper.

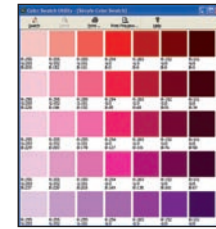


With HD Color technology



Without HD Color technology

Digital Color printers from OKI Printing Solutions deliver more than brilliant output at productivity-enhancing speeds. The C5650 Series also gives you control over the quality of your output and improves your image:

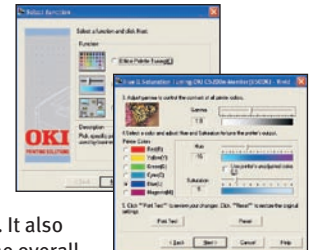


**Color Swatch**  
Easily match custom colors to the color values on your C5650 Series printer. Select a simple swatch to print a basic set of colors then match the values in your application. Select a

custom swatch and set the Hue, Saturation and Lightness to target your custom color.

**Color Correct**

Makes it easy to adjust colors commonly found in applications such as Microsoft® Word, Excel and PowerPoint®. It also lets you adjust the overall color of a print by controlling the lightness, darkness and contrast of images, and the intensity and lightness of the colors.



## EXCEPTIONAL MEDIA FLEXIBILITY



8.5" x 48" Banner

8.5" x 14" Legal

8.5" x 11" Letter

4.1" x 5.8"

## THE C5650 SERIES AT A GLANCE

Single Pass Color™ digital LED technology delivers high speed and reliability

2,000-page standard and 5,000-page High-capacity Color and Monochrome toner cartridges<sup>2</sup>

22 ppm Color and 26 ppm Monochrome print speed<sup>1</sup>

High Definition (HD) Color printing technology

LCD screen display with toner gauge to show toner status

Available with duplex functionality for 2-sided printing

100-sheet Multipurpose tray

64 MB memory, upgrades to 320 MB

300-sheet standard paper tray

60,000 pages-per-month duty cycle

Small footprint enables the C5650 Series to fit comfortably on the desktop

Optional 530-sheet 2nd paper tray

